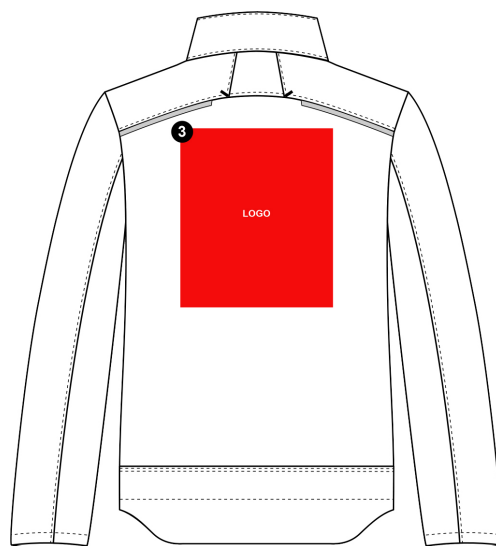
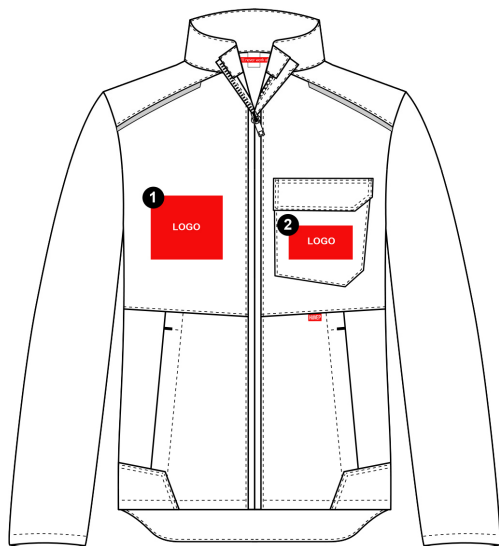


# Jacket 50329



## INSTRUCTIONS (FOR SIZE XS->)

1. Right breast available size: 10cm height x 12cm width.
2. Left breast pocket available size: 5cm height x 10cm width.
3. Back available size: 30cm height x 25cm width.

## SPECIAL ATTENTION FOR THE FOLLOWING:

- ▶ \*Seal never on stitches, snapfasteners or buttons